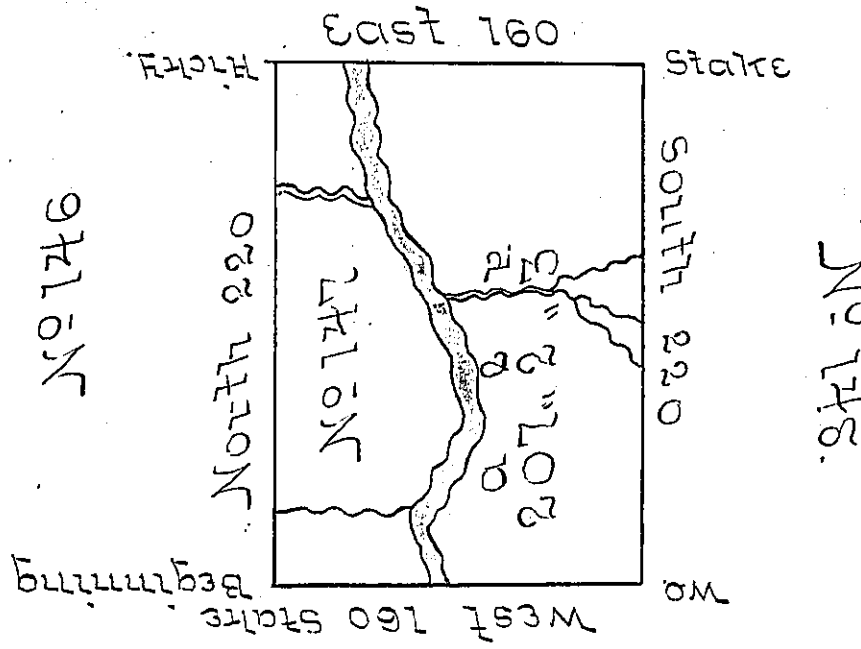


No 156

✓



The first surveyed part
of Dist. Beet's District

The above is a Draught of a Survey made June
The 1st Day 1756 in Pursuance of Instructions from
the Surveyor General Situate on the Waters of Brush
Creek on the West side of the Ohio River in District
No 2 being part of the Land to be Sold for the Rede-
mption of the Depreciation Certificates Contain-
ing Two Hundred Seven Acres one half & Three-
Eole with the Allowance of 6 p^{ct}

Dist. Beet 156

To John Lukens Esq^r
Surveyor Gen^l

IN TESTIMONY that the above is a copy of the original remaining on file in
the Department of Internal Affairs of Pennsylvania, made
conformably to an Act of Assembly approved the 16th day of
February, 1833, I have hereunto set my Hand and caused
the Seal of said Department to be affixed at Harrisburg,
this Twenty Second day of December 1905.

Geo. A. Brown
Secretary of Internal Affairs.